

**CASE**  
CONSTRUCTION

# Wheel Loaders

G SERIES



521G

621G

721G

821G

921G

1021G

1121G

**SINCE 1842**





521G



621G



721G



821G



921G




1021G



1121G







# *Dig, load, transport or clear more — for less*

Introducing the all-new G Series—a full range of powerful wheel loaders engineered to get the job done and control costs throughout the lifecycle of the machine.

- + Best-in-class breakout force
- + Best-in-class visibility
- + 4 Power Modes
- + 5-Speed Transmission\*
- + Powerful, efficient, cool running Tier 4 Final Solution
- + State-of-the-art cab for operator comfort
- + Covered by the industry's most complete protection plan — ProCare

Every design element of the G Series was analyzed and engineered to work together to provide real-world benefits and business solutions that exceed industry standards for the lowest total cost of ownership. Featuring all-new innovations that are as powerful as they are practical. From a Tier 4 engine solution that provides unmatched fuel efficiency to a cab that facilitates operator comfort and productivity, the G Series is designed to satisfy the needs of owners, fleet managers and operators.

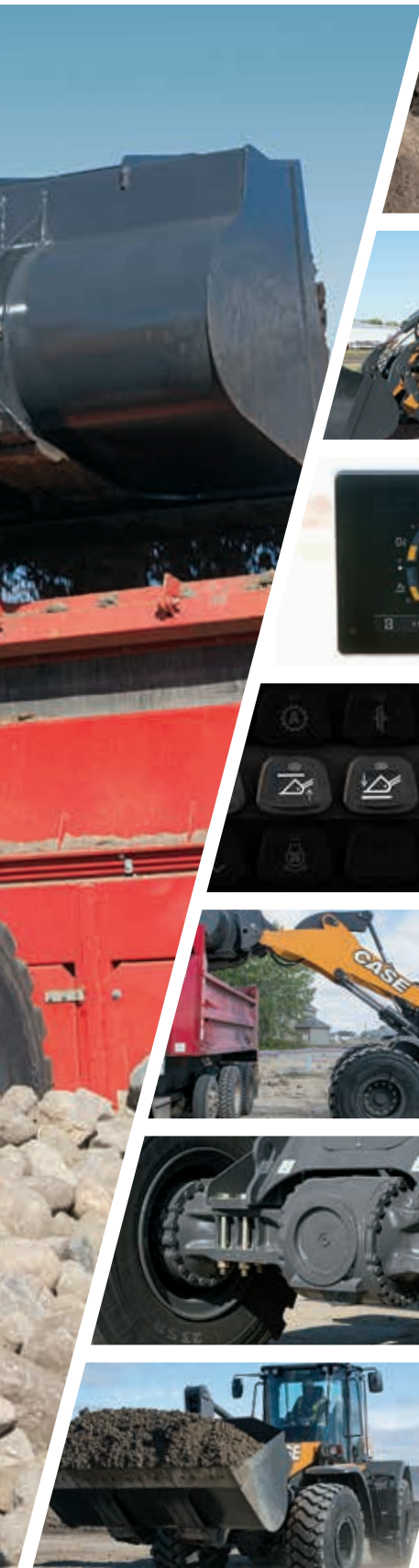
\*Optional on 721G, 821G and 921G



**POWER, CONTROL, AGILITY, GET IT ALL**







### **BEST-IN-CLASS BREAKOUT FORCE**

G Series wheel loaders begin and end with one word: **PRODUCTIVITY**. From 20,000 lbs. (521G) to over 56,000 lbs. (1121G), CASE G Series wheel loaders provide best-in-class breakout force among market leaders, providing the power you need whether you're moving dirt and gravel or loading a hopper or truck.



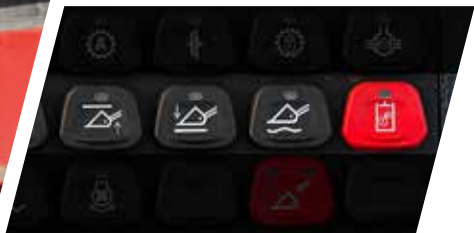
### **MULTIPLE LINKAGE OPTIONS**

The G Series includes XT, Z-bar and extended reach Z-bar models. The XT tool carrier allows better visibility down to the bucket / attachment and also provides parallel lift (which keeps material level during the loading and unloading process). The commonly chosen Z-bar linkage provides the greatest breakout force for strong, powerful digging and complete bucket fill.



### **8" LCD MULTIFUNCTION MONITOR**

The high resolution, anti-glare monitor provides greater control over insight into many loader functions.



### **AUTOMATED BUCKET CONTROLS**

Automatic bucket control features like "return-to-dig," "return-to-travel" and "height control" simplify operation while approaching trucks/hoppers and transitioning back to travel, ultimately shortening the cycle.



### **5-SPEED TRANSMISSION AND POWERINCH**

Optional 5-speed PowerShift transmission with lock-up torque converter (721G, 821G, and 921G) provides faster acceleration and roading speeds up to 25 miles per hour. PowerInch, included with 5-speed transmission, helps maintain high RPMs and maximizes hydraulic power to the loader arms and bucket cylinder. PowerInch provides incredible accuracy and control in tight loading areas, regardless of engine speed or grade.



### **MULTIPLE AXLE OPTIONS**

Standard limited slip axles (ideal for soft, slippery conditions) automatically transfer torque from slipping tire to gripping tire, ensuring proper traction regardless of working conditions. Optional heavy-duty axles with auto-locking front differential are ideal for applications on paved or hard pack surfaces.



### **RIDE CONTROL™**

Optional Ride Control provides excellent material retention and machine control over rough terrain, while reducing shock loads on the machine and operator.



# SEE A SIGNIFICANT REDUCTION IN FUEL

## SCR TECHNOLOGY AND ADVANCED COOLING

G Series wheel loaders feature patented Tier 4 Final SCR engine technology—to manage emissions while maximizing fuel efficiency and performance.

As a result, there is:

- **NO recirculation of gases (which restricts power)**
- **NO fuel wasted to burn off particulate matter**
- **NO downtime for regeneration**
- **NO extreme exhaust temperatures generated**
- **NO expensive diesel particulate filters to replace**

SCR lets the engine do what it does best – run at peak performance. This gives the faster throttle response operators want while also maintaining low exhaust temperatures and improving fuel economy by as much as 20% compared to previous CASE wheel loader versions, or those equipped with a diesel particulate filter.

## COOLER MACHINES = GREATER EFFICIENCY

To support a cool running machine, CASE features a **cooling cube module**, which positions coolers in a cube design. This ensures all coolers have access to cool, clean ambient air, limits debris buildup and provides easy access for routine cleaning. An optional variable-speed reversing fan further minimizes the risk of clogging, decreasing the need for manual cleaning.

For applications with extreme amounts of airborne debris, CASE offers a **heavy debris cooling system**.\* This includes enhanced sealing of the cooling module covers and wider cooler fin spacing to better maintain the optimum operating temperatures of mechanical and hydraulic systems.

\*Available on 621G and 721G







CASE

621G XT



**521G-921G:  
MID-MOUNTED COOLING MODULE**

The cooling cube module positions all of the machine's coolers in a cube design and positions them behind the cab. The mid-mounted design also allows the engine to be positioned farther to rear of the machine for added counterweight. A lower engine also allows CASE to provide a rear sloped hood for best-in-class rear visibility.



**1021G & 1121G:  
CASE COOLING CUBE**

The CASE cooling cube is located in the rear of the machine. A swing-out, hydraulically driven fan provides excellent access to all coolers. Removable side panels provide access to the engine components for ground-line serviceability and routine maintenance.





**THREE ERGONOMIC SEAT OPTIONS**

All adjustable to accommodate a wide range of operators



**BEST-IN-CLASS VISIBILITY**

The cab utilizes a single piece of glass, providing improved sunshade and wider wiper coverage. External mirrors are more ergonomically placed to avoid operator fatigue.



**LOAD-SENSING HYDRAULICS (4 POWER MODES)**

You can easily match engine output to the task at hand with the touch of a button:

- **ECO** for maximum fuel efficiency
- **STANDARD** for quick loading
- **MAX** for aggressive digging
- **AUTO** for engine output that responds on the fly



**INTEGRATED REARVIEW CAMERA (OPTIONAL)**

This upgrade helps improve your visibility.



**ERGONOMIC CONTROLS AND ARMREST**

The loader controls and armrest move together both with and independently of the seat.

**IMPROVED JOYSTICK STEERING**

Symmetrical to loader controls, this system gives the operator greater comfort and control.





## **AUTOMOTIVE FEEL. INDUSTRIAL PERFORMANCE**

### **BEST-IN-CLASS VISIBILITY, ADDED COMFORT AND IMPROVED ERGONOMICS**

Comfortable and intuitive with an all-new cab, the G Series is engineered for enhanced styling, superior comfort, practical innovation and intuitive technology. The G Series features improved visibility, upgraded electronics, an 8" LCD color monitor with optional integrated rearview camera, an optional heated air-ride seat, and one of the best HVAC systems in the industry.

Add to that a new, ergonomically designed joystick steering system that provides the operator with a symmetrical operating station to control loader functions and machine steering. This helps reduce fatigue—especially during repetitive, high-production applications—by eliminating the need to overextend or overexert while operating the controls.



**MEMBRANE KEYPAD**  
(Replaces rocker switches)  
The touch of a button controls multiple functions and allows the operator to program detents (e.g., height control, return to dig) from within the cab.



**BLUETOOTH SATELLITE RADIO**  
This system also comes with a USB/iPod connector and phone charger.



**PREMIUM HEATED AIR-RIDE SEAT (OPTIONAL)**  
The heated air-ride seat is available with active suspension and dynamic dampening.



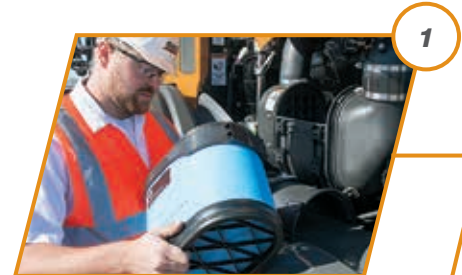
**LIGHTING**  
Each G Series offers a variety of LED work light options to provide greater visibility and safer working conditions in low-light applications.



# BEST-IN-CLASS GROUND-LINE ACCESS

## WE MAKE MAINTENANCE SIMPLE

G Series wheel loaders feature an electric rear hood lift\* that provides easy access to the engine compartment for excellent ground-line serviceability. All major regular service points can be accessed from ground level, meaning daily maintenance can be completed in a matter of minutes.





### NO TOOLS NEEDED

The G Series continues the CASE hallmark of simple serviceability with features like tool-free access to the oil cooler, radiator, other routine maintenance points and auxiliary hydraulic Connect Under Pressure (CUP) manifolds.

### EASY ACCESS TO EVERYTHING

- 1 Engine filter
- 2 Electric rear hood lift\*
- 3 Mid-mounted cooling module
- 4 Hydraulic tank site gauge
- 5 Grouped grease points
- 6 Jump-start posts
- 7 Environmental drain ports
- 8 Fuel/DEF fill
- 9 Engine oil check and fill
- 10 HVAC fresh air filter and recirculation air filter

\*Available on 621G-1121G models





Protected by  
**ProCare**

FACTORY WARRANTY  
PLANNED MAINTENANCE  
TELEMATICS

## GO BIG, WE'VE GOT YOU COVERED

CASE ProCare is the first all-in-one heavy machine support program that's as powerful as the equipment it protects. Best of all, ProCare comes standard on G Series wheel loaders and keeps you covered for up to three full years. It's the assurance growing businesses need to stay competitive, productive and profitable.

**3K**



*3-yr/3000-hr  
Full-Machine  
Factory Warranty\**  
**STANDARD**

*3-yr/3000-hr  
Planned  
Maintenance*  
**STANDARD**

*3-yr Advanced  
SiteWatch™  
Subscription*  
**STANDARD**





## **SUPPORT COMES STANDARD**



### ***STRONGER PRODUCT SUPPORT SOLUTIONS***

Your CASE dealer knows best how you can maximize your equipment investment and uptime—with genuine CASE parts, expert service and a complete range of product support solutions including CASE remanufactured and all-makes parts. CASE supports better parts availability and faster deliveries through nine parts distribution centers in North America and a forecasting system to ensure that the right parts will be there when you need them. And only CASE dealers have exclusive access to the Electronic Service Tool (EST) that quickly pinpoints machine issues. Just ask your dealer for details.



### ***FLEXIBLE FINANCIAL OPTIONS***

Specialized finance programs and flexible leasing packages put you in the driver's seat of industry-leading CASE equipment while no-nonsense warranties and comprehensive protection plans ensure that your equipment is protected. As the only finance company dedicated to CASE, we offer strong products and services designed around your unique needs and are the only ones supported by the helpful service professionals at your CASE dealer.



## ATTACHED TO VERSATILITY

### INTEGRATED HYDRAULIC QUICK-COUPLER

CASE offers an integrated hydraulic quick-coupler on our wheel loaders that lets operators conveniently switch out attachments from the comfort of the cab. Its factory-built design offers improved visibility and won't alter the physics or breakout force of the machine like after-market options will.



### 140 ATTACHMENTS AND THEN SOME

G Series wheel loaders work with more than 140 CASE attachments, including buckets, forks, brooms and more. CASE also has partnerships with numerous attachment manufacturers for even greater versatility. Consult your dealer for details.



### SMARTFIT™ BUCKET TEETH

G Series buckets come standard with the innovative SmartFit bucket tooth system. These heavy-duty, self-sharpening teeth combine exceptional strength and unmatched ease of installation thanks to a hammerless fastener system with reusable locking pins. Available in a full range of styles.

**SMARTFIT™**  
BUCKET TOOTH SYSTEM





# SPECIFICATIONS AND DIMENSIONS

<b>SPECIFICATIONS</b>	<b>521G</b>	<b>621G</b>	<b>721G</b>	<b>821G</b>	<b>921G</b>	<b>1021G</b>	<b>1121G</b>
<b>Engine</b>	FPT F4HFE413NB	FPT F4HFE613W	FPT F4HFE613T	FPT F4HFE613S	FPT F4HFE613R	FPT F2CFE614H	FPT F2CFE614F
<b>Emissions Certification*</b>	Tier 4 Final	Tier 4 Final	Tier 4 Final	Tier 4 Final	Tier 4 Final	Tier 4 Final	Tier 4 Final
<b>Displacement – in<sup>3</sup> (L)</b>	275 (4.5)	411 (6.7)	411 (6.7)	411 (6.7)	411 (6.7)	531 (8.7)	531 (8.7)
<b>Cylinders</b>	4-cylinder in-line	6-cylinder in-line	6-cylinder in-line	6-cylinder in-line	6-cylinder in-line	6-cylinder in-line	6-cylinder in-line
<b>Net Horsepower – hp (kW)</b>	131 (98)	162 (121)	179 (133)	211 (158)	242 (180)	296 (221)	320 (239)
<b>Net Peak Torque – lb-ft (Nm)</b>	424 (575)	510 (692)	674 (914)	845 (1 145)	930 (1 261)	1,064 (1 442)	1,154 (1 564)
<b>Operating Weight – lb (kg)</b>	24,290 (11 018)	28,159 (12 773)	32,492 (14 738)	40,057 (18 170)	45,070 (20 443)	56,365 (25 567)	61,650 (27 964)
<b>Breakout Force – lb (kg)</b>	19,370 (8 786)	25,487 (11 561)	32,158 (14 587)	35,288 (16 007)	37,688 (17 095)	45,049 (20 434)	49,934 (22 650)
<b>Full Turn Tipping Load, ISO Deflected Tires – lb (kg)</b>	16,030 (7 271)	19,158 (8 690)	20,587 (9 338)	24,514 (11 119)	28,529 (12 940)	35,723 (16 204)	38,457 (17 444)
<b>Bucket Capacity Range: Bolt-on-Edge – yd<sup>3</sup> (m<sup>3</sup>)</b>	2.1 - 2.6 (1.6 - 2.0)	2.5 - 3.0 (1.9 - 2.3)	3.0 - 3.5 (2.3 - 2.7)	3.5 - 4.5 (2.7 - 3.4)	4.0 - 4.75 (3.1 - 3.6)	4.75 - 5.5 (3.6 - 4.2)	5.25 - 6.25 (4.0 - 4.8)
<b>Transmission Gears</b>	4F/3R	4F/3R	4 or 5F/3R	4 or 5F/3R	4 or 5F/3R	4F/3R	4F/3R
<b>Bucket Size: GP with Bolt-on-Edge – yd<sup>3</sup> (m<sup>3</sup>)</b>	2.3 (1.8)	2.75 (2.1)	3.25 (2.5)	4.25 (3.2)	4.75 (3.6)	5.5 (4.2)	6.25 (4.8)
<b>Max. Material Density, ISO – lb/yd<sup>3</sup> (kg/m<sup>3</sup>)</b>	3,485 (2 068)	3,483 (2 067)	3,167 (1 879)	2,884 (1 711)	3,003 (1 782)	3,248 (1 927)	3,077 (1 826)
<b>DIMENSIONS</b>	<b>521G</b>	<b>621G</b>	<b>721G</b>	<b>821G</b>	<b>921G</b>	<b>1021G</b>	<b>1121G</b>
<b>Height to Top of ROPS Cab</b>	128.9 in (3 275 mm)	133.2 in (3 384 mm)	133.0 in (3 378 mm)	136.2 in (3 460 mm)	136.4 in (3 464 mm)	140.8 in (3 577 mm)	140.8 in (3 576 mm)
<b>Hinge Pin Height</b>	142.0 in (3 606 mm)	150.9 in (3 833 mm)	156.5 in (3 976 mm)	162.2 in (4 120 mm)	162.3 in (4 124 mm)	167.1 in (4 245 mm)	175.2 in (4 449 mm)
<b>Dump Height – Fully Raised, 45° Dump</b>	106.7 in (2 711 mm)	112.2 in (2 849 mm)	115.2 in (2 926 mm)	117.3 in (2 981 mm)	114.6 in (2 912 mm)	121.1 in (3 077 mm)	126.3 in (3 209 mm)
<b>Operating Height – Fully Raised with Spillguard</b>	184.3 in (4 682 mm)	195.6 in (4 968 mm)	205.7 in (5 225 mm)	215.4 in (5 471 mm)	220.1 in (5 589 mm)	229.3 in (5 823 mm)	242.0 in (6 147 mm)
<b>Bucket Reach – Fully Raised, 45° Dump</b>	39.8 in (1 012 mm)	38.0 in (965 mm)	44.2 in (1 123 mm)	43.4 in (1 102 mm)	46.8 in (1 189 mm)	49.8 in (1 265 mm)	50.1 in (1 273 mm)
<b>Wheelbase</b>	108.3 in (2 750 mm)	114.2 in (2 900 mm)	128.1 in (3 253 mm)	131.5 in (3 340 mm)	131.5 in (3 340 mm)	139.8 in (3 550 mm)	139.8 in (3 550 mm)
<b>Overall Length – Bucket Level on Ground</b>	263.3 in (6 687 mm)	287.9 in (7 312 mm)	301.6 in (7 660 mm)	315.1 in (8 004 mm)	322.7 in (8 198 mm)	352.3 in (8 949 mm)	361.1 in (9 172 mm)
<b>Ground Clearance</b>	13.4 in (341 mm)	15.3 in (389 mm)	15.1 in (384 mm)	17.0 in (431 mm)	17.1 in (435 mm)	17.2 in (437 mm)	17.2 in (437 mm)
<b>Overall Width without Bucket</b>	96.4 in (2 448 mm)	97.6 in (2 478 mm)	100.7 in (2 558 mm)	111.4 in (2 829 mm)	111.4 in (2 829 mm)	117.2 in (2 978 mm)	117.2 in (2 978 mm)
<b>Angle of Departure</b>	30°	25°	29°	29°	29°	23°	23°

\*Note:

DOC = Diesel Oxidation Catalyst

DPF = Diesel Particulate Filter

SCR = Selective Catalytic Reduction



## **BUILDING A STRONG CASE**

Since 1842, we at CASE Construction Equipment have lived by an unwavering commitment to build practical, intuitive solutions that deliver both efficiency and productivity. We continually strive to make it easier for our customers to implement emerging technologies and new compliance mandates.

Today, our global scale combined with our local expertise enables us to keep customers' real-world challenges at the center of our product development. This focus has led to numerous innovations like Ride Control™, EZ-EH controls, blade shake, PowerLift™, over-center boom design and the peace of mind that only CASE ProCare provides.

Every CASE machine is backed by more than 350 North American dealer locations, thousands of OEM, remanufactured and Gold Value™ parts, and flexible financing and insurance options that provide the kind of reliable, steadfast support you expect from a professional partner.

We are passionate about improving the lives of others, whether investing in our veterans or raising awareness about local infrastructure initiatives through Dire States. Our goal is to build both stronger machines — and stronger communities.

At the end of the day, we do what's right by our customers and our communities so that they can count on CASE.

**[CaseCE.com/G-Series](http://CaseCE.com/G-Series)**

©2017 CNH Industrial America LLC. All rights reserved. CASE is a trademark registered in the United States and many other countries, owned by or licensed to CNH Industrial N.V., its subsidiaries or affiliates. CNH Industrial Capital is a trademark in the United States and many other countries, owned by or licensed to CNH Industrial N.V., its subsidiaries or affiliates. Printed in U.S.A. Contains 10% post-consumer fiber.

Form No. CCE201702GWL

IMPORTANT: CASE Construction Equipment Inc. reserves the right to change these specifications without notice and without incurring any obligation relating to such change. Availability of some models and equipment builds vary according to the country in which the equipment is used. The illustrations and text may include optional equipment and accessories and may not include all standard equipment. Your CASE dealer/distributor will be able to give you details of the products and their specifications available in your area.



CASE Construction Equipment is biodiesel-friendly

NOTE: All engines meet current EPA emissions regulations. All specifications are stated in accordance with SAE Standards or Recommended Practices, where applicable.



Always read the Operator's Manual before operating equipment. Inspect equipment before using it, and be sure it is operating properly. Follow the product safety signs and use any safety features provided.